

LIFEbank™ DISEASE-SPECIFIC SYSTEMS

DV Biologics now offers a unique set of primary cells from various diseased states, ranging from polygenic diseases such as diabetes type 2, to rare genetic disorders, such as mucopolysaccharidoses. Our LIFEbank™ DISEASE-SPECIFIC SYSTEMS includes not only various cell types (dermal fibroblasts, mononuclear cells, bone marrow stromal cells, skeletal muscle cells, dental pulp cells, gonadal stromal cells) but most importantly, cells from the same pedigree. For example, DV Biologics Duchenne muscular dystrophy (DMD) set consists of cells derived from affected and unaffected family members (Fig 1).

This unparalleled cellular pedigree isolated from skin, muscle and bone marrow is an effective tool for understanding the etiology and nature of this devastating disease. The existence of DMD patient fibroblasts (SKU: aI001-f-DMD) (Fig. 2-4) and muscle cells (SKU: aM001-f-DMD) facilitates the study of this disease. With the recent advancements in induced pluripotent stem cell (iPSC) reprogramming technology*, DV Biologics offers these cells as a novel tool for understanding genetic disease transmission, development and treatment. Our DMD pedigree system is the first commercially available tool that allows such a sophisticated study of muscular dystrophy.

Furthermore, we offer patients' fibroblasts from additional disorders of various etiologies which will definitely facilitate toxicology testing, disease modeling, drug screening and iPSC technology. Try DV Biologics diseased fibroblasts and/or muscle cells for your next IPS experiments. We are confident they will help!

"Ask about our custom diseased pedigree cell and genomic products designed to meet your needs!"

*Yamanaka, S. (2009). Cell 137, 13-17

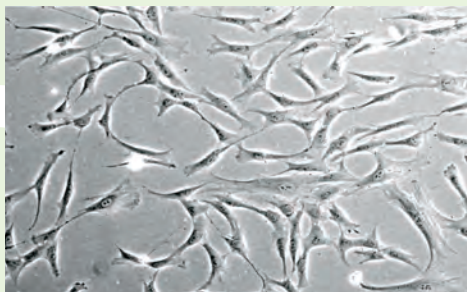


Fig 2. Phase contrast image of dermal fibroblasts isolated from a muscular dystrophy patient.

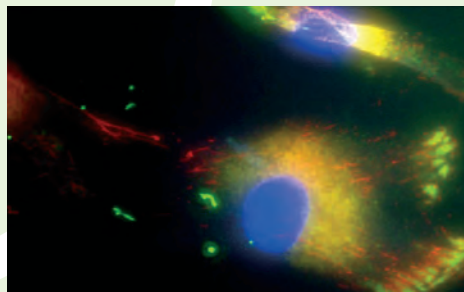
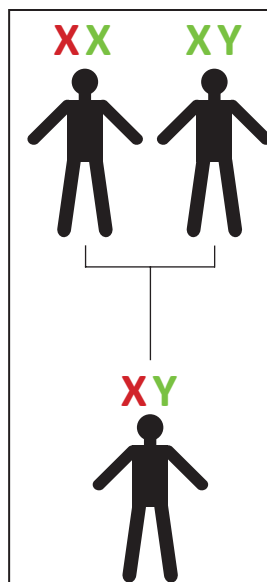


Fig 3. ICC staining of dermal fibroblasts from a muscular dystrophy patient double labeled with antibodies directed against human fibroblasts (green) and fibronectin (red). Nuclei are stained with DAPI (blue).



DV Biologics offers a unique cell panel along with corresponding genomic/proteomic products from a family afflicted with Duchenne muscular dystrophy. Available are dermal fibroblasts (SKU: aI001-f-DMD), skeletal muscle cells (SKU: aM001-f-DMD), bone marrow mononuclear cells (aH002-f-DMD), and bone marrow stromal cells (aH005-f-DMD) from a muscular dystrophy patient. Dermal fibroblasts and skeletal muscle cells from both parents can be also purchased from DV Biologics, providing an exceptional advantage in studying Duchenne muscular dystrophy.

DV Biologics Duchenne Muscular Dystrophy pedigree cell package offers researchers unprecedented tools for your research needs. Our DMD pedigree gives you skeletal muscle and skin fibroblast cells from father, mother, and son. You will receive 6 vials of cells containing >500,000 cells in each one for your research needs.

ORDERING INFORMATION:

Description	SKU	Price
DMD Cell Package	DMD-CP	\$ 5000

The set includes:

- Skin fibroblasts isolated from DMD patient
- Skin fibroblasts isolated from DMD male parent
- Skin fibroblasts isolated from DMD female parent
- Skeletal muscle cells isolated from DMD patient
- Skeletal muscle cells isolated from DMD male parent
- Skeletal muscle cells isolated from DMD female parent

DV Biologics genomics package consists of total RNA (10 µg each) and protein lysate (100 µg each) from patient's and parents' skin fibroblasts and skeletal muscle cells.

ORDERING INFORMATION:

Description	SKU	Price
DMD Genomic Skin Fibroblasts Package	aI001-DMD-GP	\$ 1500

The set includes:

- Total RNA isolated from DMD patient
- Total RNA isolated from DMD male parent
- Total RNA isolated from DMD female parent
- Cell lysate isolated from DMD patient
- Cell lysate isolated from DMD male parent
- Cell lysate isolated from DMD female parent

Description	SKU	Price
DMD Genomic Skeletal Muscle Cells Package	aM001-DMD-GP	\$ 2000

The set includes:

- Total RNA isolated from DMD patient
- Total RNA isolated from DMD male parent
- Total RNA isolated from DMD female parent
- Cell lysate isolated from DMD patient
- Cell lysate isolated from DMD male parent
- Cell lysate isolated from DMD female parent

Fig 1. Primary cell collection from a family affected with Duchenne muscular dystrophy.

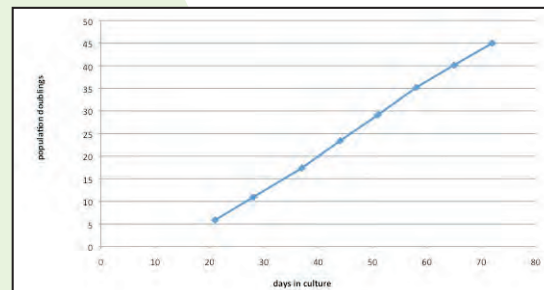


Fig 4. Fibroblast growth curve demonstrates that DV Biologics fibroblasts are expandable to greater than 35 population doublings.

Order Form

Catalog No.	Description	Quantity	Unit Price	Total Price

Shipping and Handling will be added to the order by DV Biologics. Please call for estimate.

Ways To Place An Order

Orders may be placed by phone, fax, email or through the online ordering system. Please visit the website to download DV Biologics PDF Order Form to place an order via fax or use the form below.

Shipping & Delivery

US. All North American orders are shipped from DV Biologics headquarters in Southern California and freight is pre-paid and added to your invoice as a separate item. Orders are shipped within 1 or 2 working days, depending upon the availability of the item. Shipments are sent every Monday to Thursday via overnight courier service for delivery on the next business day.

International. International orders are shipped from DV Biologics headquarters in Southern California every Monday unless specially requested to be shipped on another date.

Conditions

Products are sold for laboratory research use only and are not to be used in humans for any purpose. As a condition of purchase, the purchaser shall not make products available for the purpose of further resale or alter the product label and the DV Biologics mark of origin without the express written permission of DV Biologics LLC.

Contact Us:

By phone 1.888.773.5959 (Toll Free North America)

By fax 1.877.773.5959 (Toll Free North America)

By email orders@dvbiologics.com

Ordering Hours:

Monday through Friday, 9:00 am - 5:00 pm Pacific Standard Time.

Order anytime, 24 hours a day, 365 days a year by email or fax. If your order arrives outside our normal business hours, it will be quickly processed at the beginning of the next business day.



1239 Victoria Street • Costa Mesa • CA • 92627 • Tel . (888) 773-5959 • Fax . (877) 773-5959